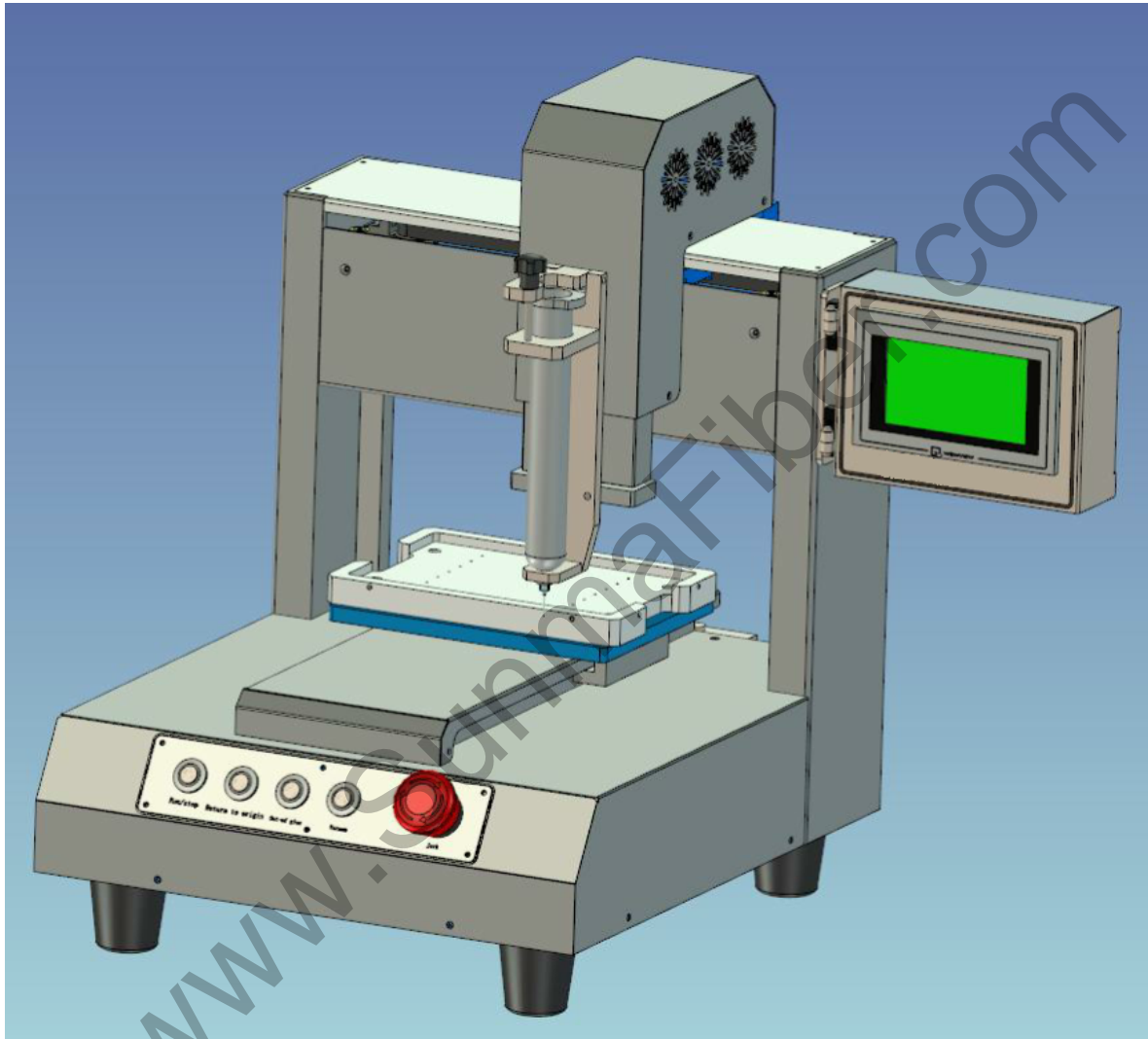


Glue injection machine

ST-3000MX

Instructions



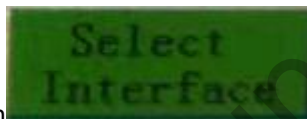
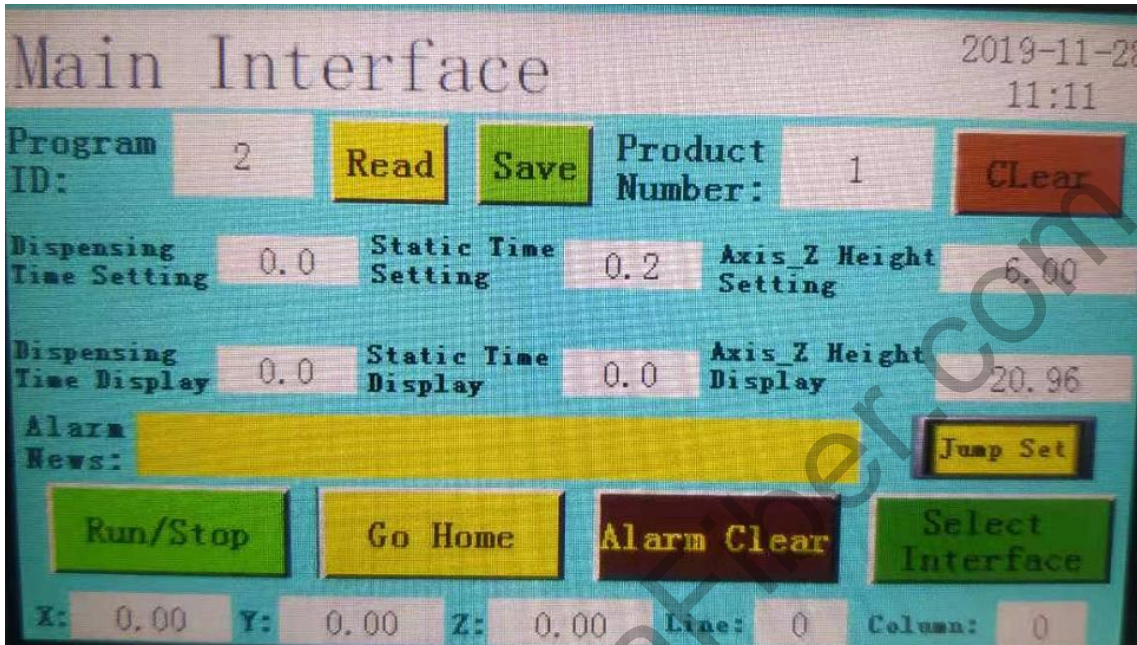
Reference for setting parameters of Gum injection varieties

ID serial number	name	hole count	array distance
1	SC	150	6.6*19.6
2	LC	250	4.6*16
3	LC	200	5.5*16
4	SC	100	8*21.5
5	LC	100	8*21.5

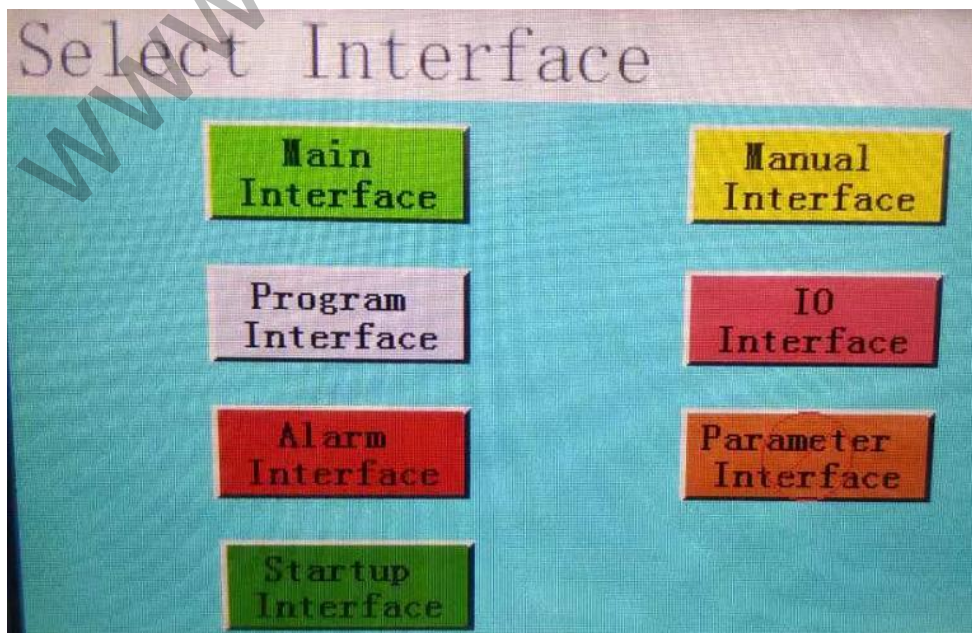
The machine has saved the above 5 ID serial numbers. When in use, the corresponding ID number can be selected according to the name of the product. (No need to re-enter the parameter).

Guidelines for setting up glue injectors

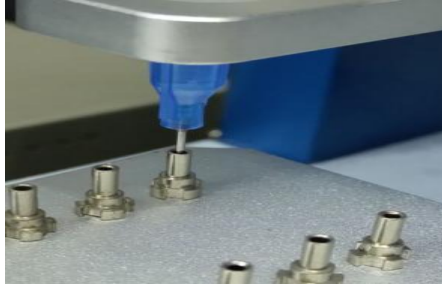
1. Open the main screen of the display screen, set the dispensing time, dispensing time $0.6 \leq 1$ second, end time (static time) 0.2 seconds, wire drawing height (Z axis height): 5.



2. Press the selection screen  Go to the selection screen.

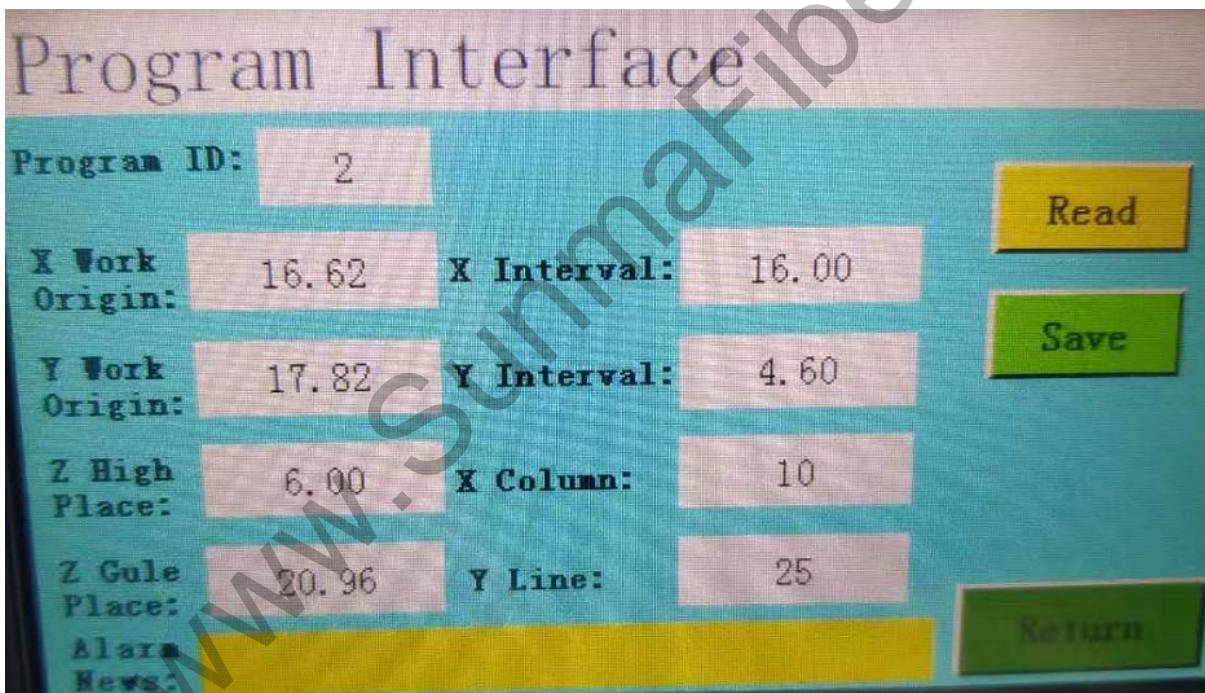


3. Click and move the picture Key passing The speed key can be pressed when the moving needle is aligned into the hole of the tail handle of the core. Select (fast, medium and slow) speed alignment core tail handle after the needle into the core needle pipe half.



4. Then press (by the origin of the work to remember Key), save the coordinate position of the XYZ triaxial.

5, then return to the main interface, press (program screen) Key), display the array dispensing, fill in the following parameters:



Program Interface

Program ID:	2			Read
X Work Origin:	16.62	X Interval:	16.00	Save
Y Work Origin:	17.82	Y Interval:	4.60	
Z High Place:	6.00	X Column:	10	Return
Z Gule Place:	20.96	Y Line:	25	
Alara News:				

6. Press return Key, enter the automatic screen and press back to the origin Key.

7. add a white gasket to the needle, as shown below:

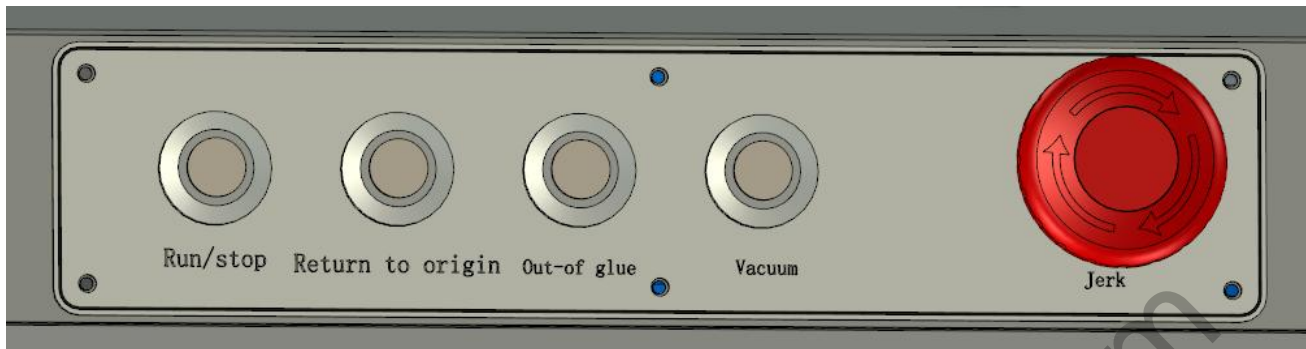


8. Press the button key on the front of the machine directly and press the operation key to make it.



Guidelines for the operation of glue injection machines

1. Press the switch power switch button to turn on.
2. Press the return origin button to reset the button, machine reset.



3. Start setting the needle, press " "the key, the needle automatically runs to the first product of the optical fiber core, checks whether the needle is in the core hole, can be fine-tuned and aligned by X/Y/Z direction, press Key to save:



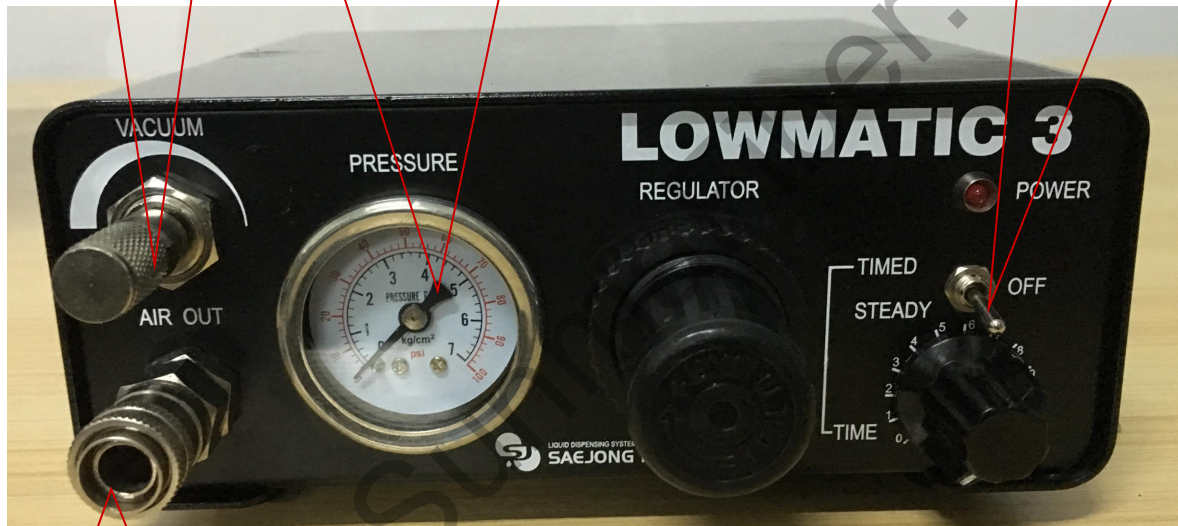
4. The setting is complete and the key production can be started according to the "Run/ Stop".

Controller Setup Requirements

Vacuum suction function

The pressure is set above 0.55

Power switch down



Air hole, push hard

Special card for after-sales service

User unit		contacts	
Contact number		detailed address	
Purchasing time			
Device name			
Unit name			
Equipment number			
	Unit seal:		